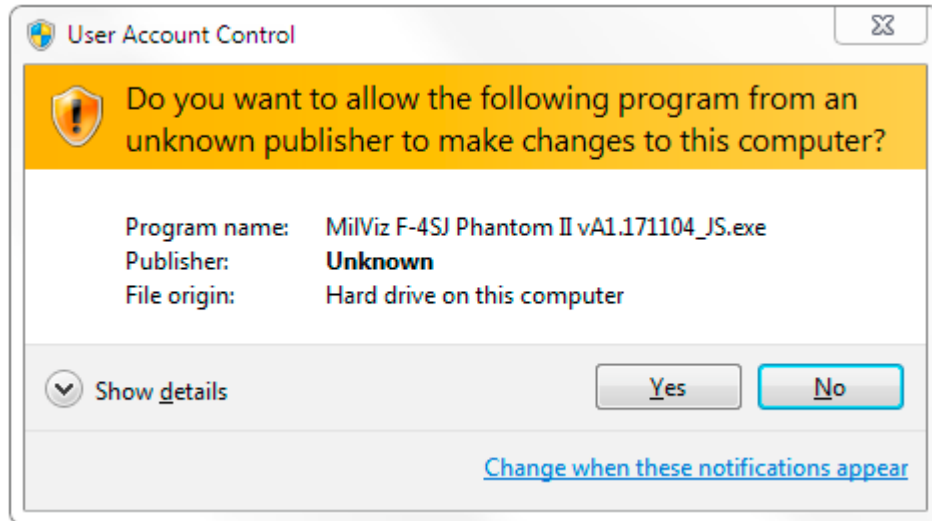
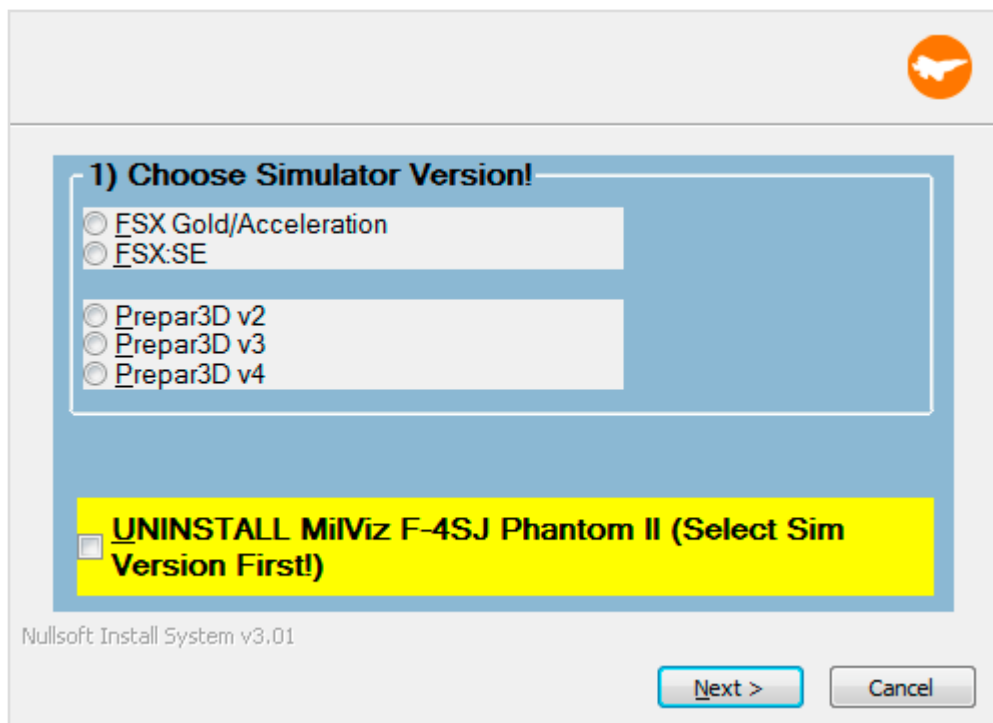


Installation

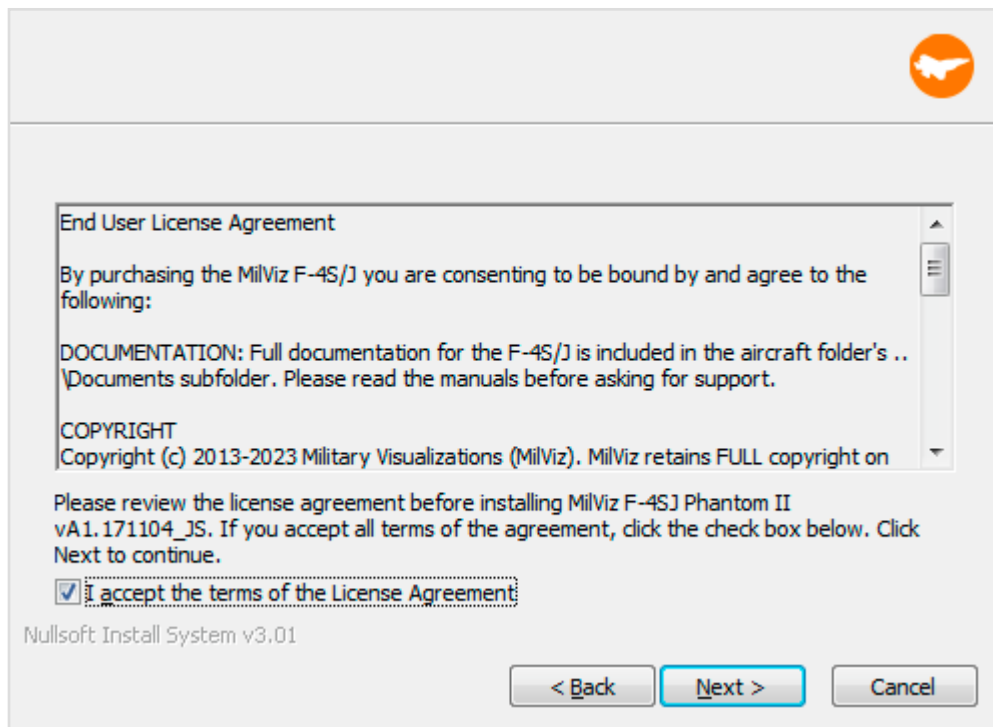
1. Temporarily disable any anti-virus programs. **Failure to do so will result in a non-functional sim.**
2. Download installer.



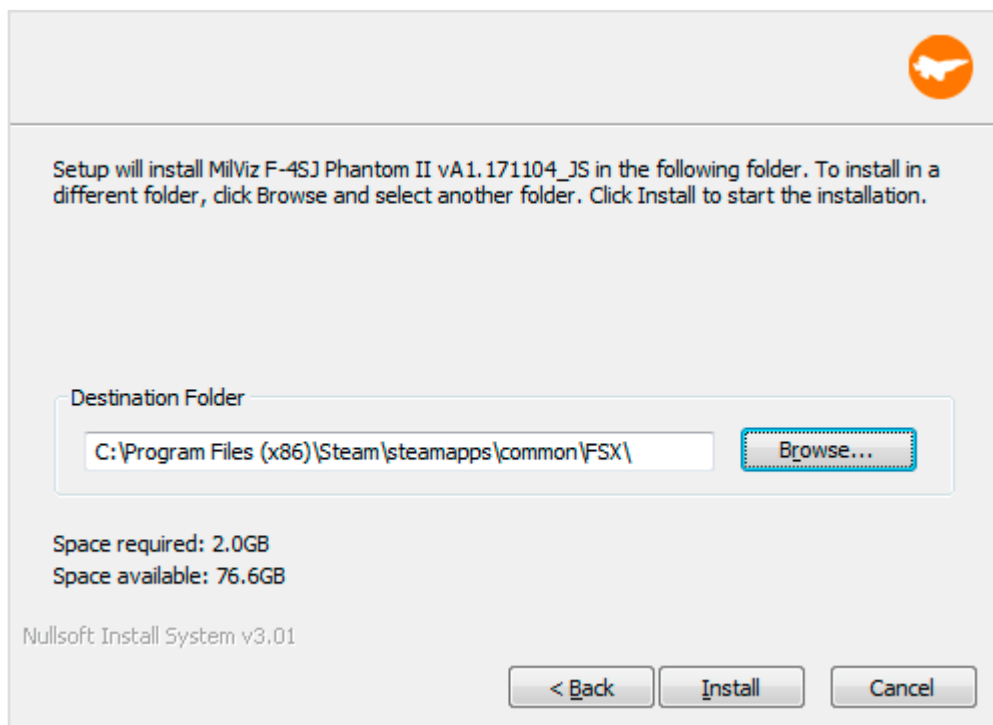
3. Run installer.
4. At the User Account Control prompt click 'Yes'.



5. Choose which simulator version(s) you would like to install to and click 'Next'.

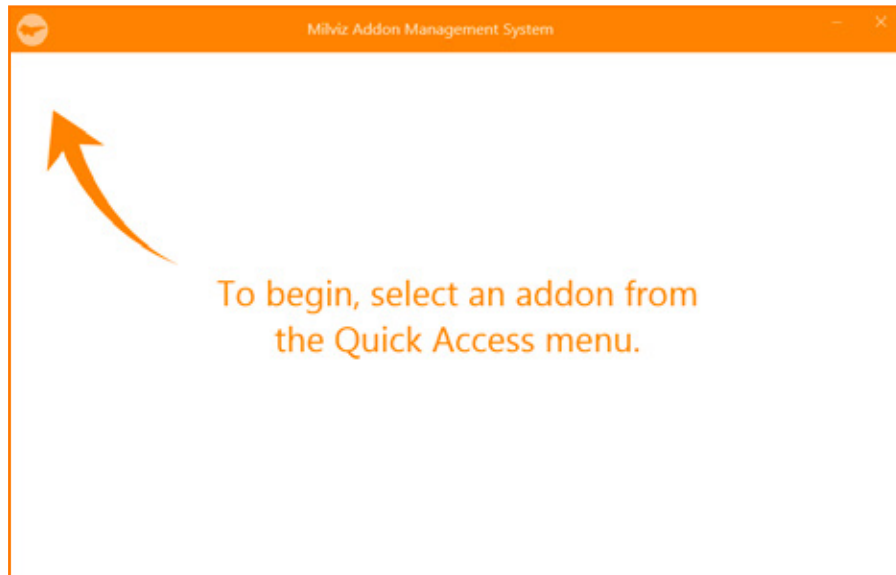


6. Accept the terms of the End User License Agreement and click 'Next'.

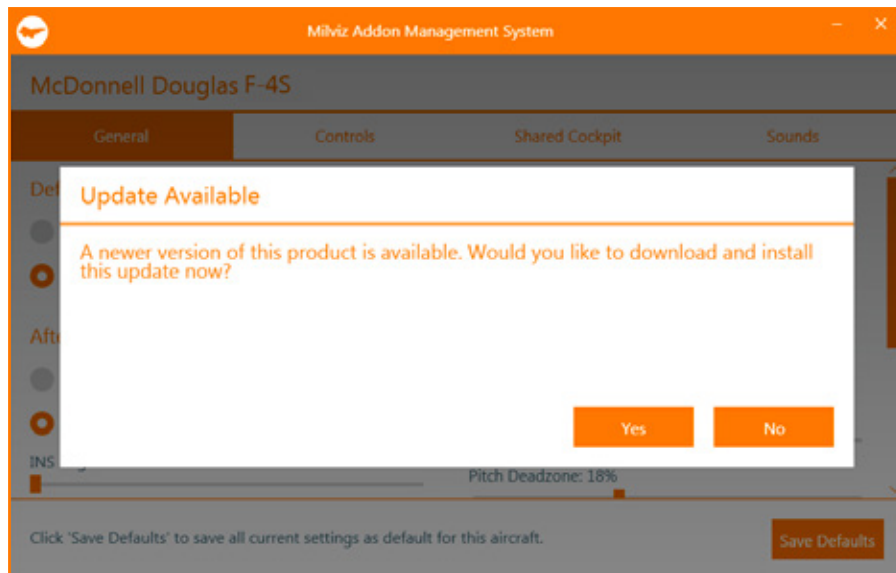


7. Confirm the installer path if applicable, and click 'Next'.
8. Once the installation process has completed, click 'Close'.
9. Turn your antivirus back on and make sure the FSX/P3D directory is off limits to any AV scanning.
Failure to create an exemption for the FSX/P3D directory will result in a non-functioning sim.

Updating



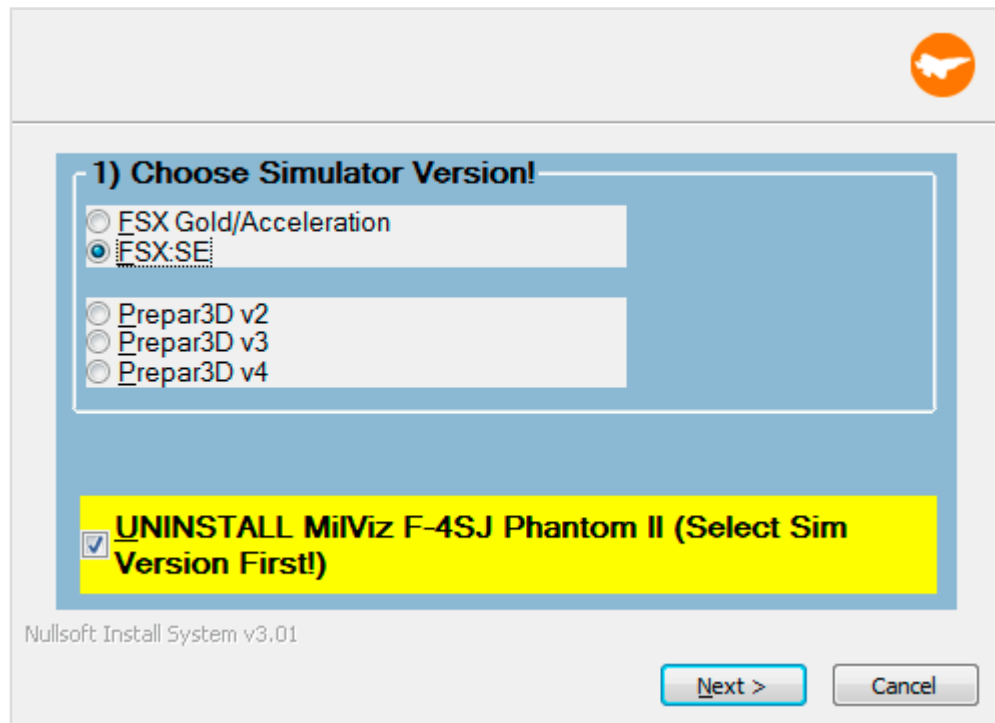
1. Open the MVAMS on your desktop.
If you do not see it, navigate to C:\Users\username\AppData\Local\MVAMS



2. If an update is available it will appear here.
Click 'yes' and run the updater. The update process is similar to the install process.
In some circumstances it may be necessary to run the updater exe again to update installed platforms missed in the initial update. Navigate to C:\Users\username\AppData\Local\MVAMS\Downloads, find your updater exe file and run it again selecting any installed sim platforms that were omitted.
3. Once the update has been completed run MVAMS once again to check for more updates.

Major upgrades are beyond the scope of the MVAMS updater. If you receive notification from your vendor of a new build, it will be necessary to uninstall your existing model before applying the update.

Uninstalling



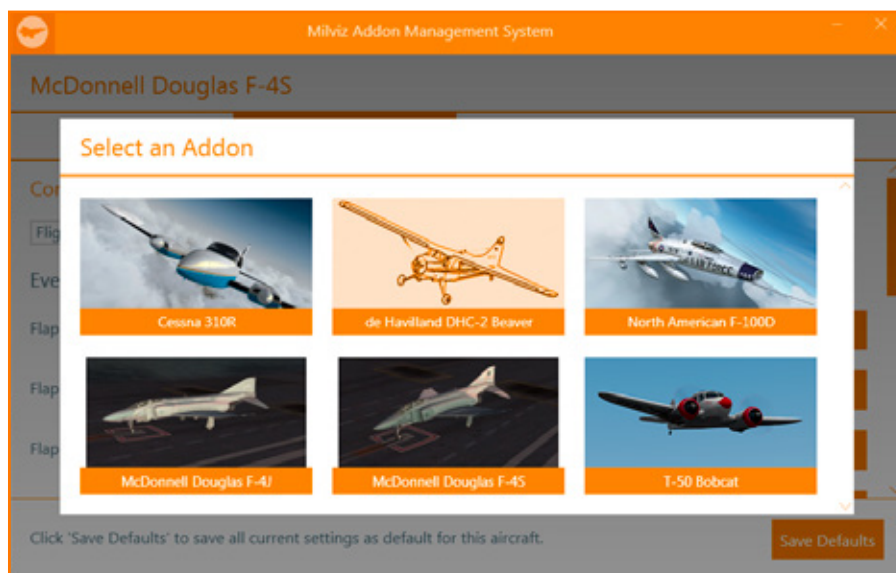
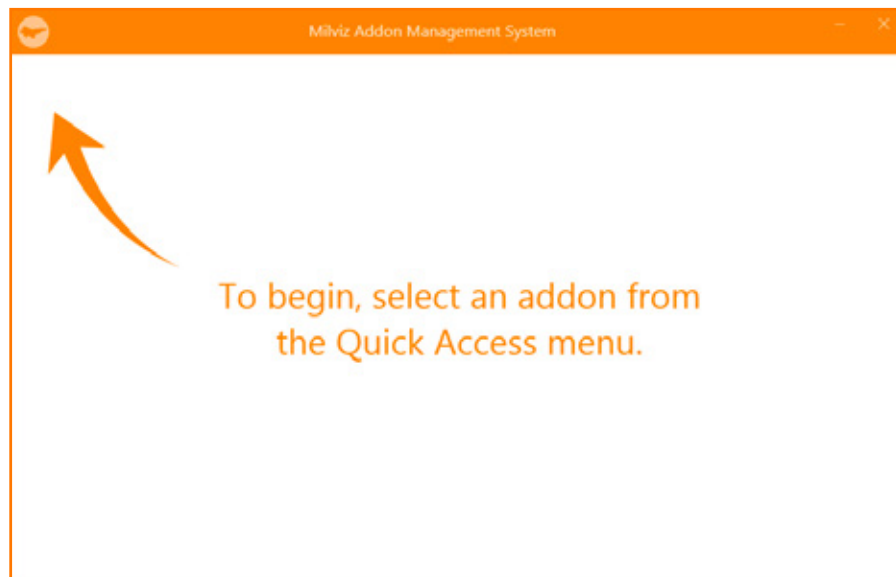
If for any reason you need to uninstall your product, you should use the yellow highlighted 'UNINSTALL' option in your most recent installer.

1. If you intend to update or reinstall afterwards, please be sure to back up any custom liveries as they will be deleted in the uninstall process.
2. Open installer
3. Select your sim platforms
4. Check the 'UNINSTALL' option

The next steps are the same as the install procedure:

5. Click 'Next'
6. Accept EULA
7. Confirm install path if requested
8. Once the installation process has completed, click 'Close'.

MVAMS: Milviz Aircraft Management System



Unique pre-flight configurations for each of your MVAMS supported aircraft can be set and saved using the MilViz Aircraft Management System. The following images show which features are supported in this aircraft. Click on your aircraft to begin.

General

Milviz Addon Management System

McDonnell Douglas F-4S

General

Controls

Shared Cockpit

Sounds

Default State

☐ Cold and Dark

☒ Ready to Fly

Afterburner

☐ Engage by Outboard Toggle

☒ Engage by Throttle Position

INS Alignment Time:

Fast

Afterburner Threshold: 80%

Radios

COM Aux CH Frequency:

118.500

1

Front

ADF Aux CH Frequency:

100.0

1

Front

ILS Channel Frequency:

108.10

1

Miscellaneous

☐ Radar Warmup (3 Minutes)

☐ Auto Present Position Update

☐ Auto Steerpoint Sequence

CSS

Pitch Dampening: 0.50

Pitch Deadzone: 18%


Roll Dampening: 0.50

Roll Deadzone: 18%

Click 'Save Defaults' to save all current settings as default for this aircraft.

Save Defaults

CONTROLS: Flight Controls



Milviz Addon Management System

McDonnell Douglas F-4S

General

Controls

Shared Cockpit

Sounds

Control Mappings


Flight Controls

Event	Keyboard	Controller/Joystick
Flaps (Increase)	UNMAPPED	UNMAPPED
Flaps (Decrease)	UNMAPPED	UNMAPPED
Flaps (Set)	UNMAPPED	UNMAPPED
Speedbrake (Increase)	UNMAPPED	UNMAPPED
Speedbrake (Decrease)	UNMAPPED	UNMAPPED
Speedbrake (Toggle)	UNMAPPED	UNMAPPED
Pitch Trim (Nose Up)	UNMAPPED	UNMAPPED
Pitch Trim (Nose Down)	UNMAPPED	UNMAPPED
Roll Trim (Roll Right)	UNMAPPED	UNMAPPED
Roll Trim (Roll Left)	UNMAPPED	UNMAPPED
Yaw Trim (Right Trim)	UNMAPPED	UNMAPPED
Yaw Trim (Left Trim)	UNMAPPED	UNMAPPED

Click 'Save Defaults' to save all current settings as default for this aircraft.

Save Defaults

CONTROLS: Engine Controls

 Milviz Addon Management System

McDonnell Douglas F-4S

General

Controls

Shared Cockpit

Sounds

Control Mappings

Engine Controls

Event	Keyboard	Controller/Joystick
Afterburner (Toggle)	UNMAPPED	UNMAPPED
Engine 1 Master	UNMAPPED	UNMAPPED
Engine 2 Master	UNMAPPED	UNMAPPED
Engine 1 Start	UNMAPPED	UNMAPPED
Engine 2 Start	UNMAPPED	UNMAPPED
Engine 1 Cutoff	UNMAPPED	UNMAPPED
Engine 2 Cutoff	UNMAPPED	UNMAPPED
Engine 1 Ignition (ADV Only)		UNMAPPED
Engine 2 Ignition (ADV Only)		UNMAPPED

Click 'Save Defaults' to save all current settings as default for this aircraft.

Save Defaults

CONTROLS: Weapons Controls

Event	Keyboard	Controller/Joystick
Air Refueling Release	UNMAPPED	UNMAPPED
Cage	UNMAPPED	UNMAPPED
Chaff Release	UNMAPPED	UNMAPPED
Flare Release	UNMAPPED	UNMAPPED
Radar Missile Select	UNMAPPED	UNMAPPED
Gun Select	UNMAPPED	UNMAPPED
Heat Missile Select	UNMAPPED	UNMAPPED
Heat Reject	UNMAPPED	UNMAPPED
Padlock	UNMAPPED	UNMAPPED
Radar Cursor Azimuth (Axis)		UNMAPPED
Radar Cursor Azimuth (Left)	UNMAPPED	UNMAPPED
Radar Cursor Azimuth (Right)	UNMAPPED	UNMAPPED
Radar Cursor Range (Axis)		UNMAPPED
Radar Cursor Range (Decrease)	UNMAPPED	UNMAPPED
Radar Cursor Range (Increase)	UNMAPPED	UNMAPPED
Radar Elevation (Axis)		UNMAPPED
Radar Elevation (Decrease)	UNMAPPED	UNMAPPED
Radar Elevation (Increase)	UNMAPPED	UNMAPPED
Radar Lock	UNMAPPED	UNMAPPED
Radar Lock Half Action		UNMAPPED
Radar Lock Full Action		UNMAPPED
Air-To-Air Button	UNMAPPED	UNMAPPED

CONTROLS: Miscellaneous Controls



Milviz Addon Management System

McDonnell Douglas F-4S

General

Controls

Shared Cockpit

Sounds

Control Mappings

Miscellaneous Controls

Event	Keyboard	Controller/Joystick
Yaw SAS	UNMAPPED	UNMAPPED
Roll SAS	UNMAPPED	UNMAPPED
Pitch SAS	UNMAPPED	UNMAPPED
Autopilot Altitude Hold	UNMAPPED	UNMAPPED
Autopilot Master	UNMAPPED	UNMAPPED
NWS Control/Radar Auto Acq	UNMAPPED	UNMAPPED
Drag Chute	UNMAPPED	UNMAPPED
APCS Toggle	UNMAPPED	UNMAPPED
Bomb Release	UNMAPPED	UNMAPPED
Master Caution Reset	UNMAPPED	UNMAPPED
Master Exterior Lights	UNMAPPED	UNMAPPED
Signal Exterior Lights	UNMAPPED	UNMAPPED

Click 'Save Defaults' to save all current settings as default for this aircraft.

Save Defaults

SHARED COCKPIT

Milviz Addon Management System

McDonnell Douglas F-4S

General

Controls

Shared Cockpit

Sounds

Manage IP Addresses

Name	IP Address			
IP#1	127	0	0	1
IP#2	127	0	0	1
IP#3	127	0	0	1
IP#4	127	0	0	1
IP#5	127	0	0	1
IP#6	127	0	0	1
IP#7	127	0	0	1
IP#8	127	0	0	1
IP#9	127	0	0	1
IP#10	127	0	0	1

Use this section to enter the IP address that you want to connect to. Select the radio button next to the one you want to use. You may also enter a name for each IP address to help you remember who's it is.

Click 'Save Defaults' to save all current settings as default for this aircraft.

Save Defaults

SOUNDS

Milviz Addon Management System

McDonnell Douglas F-4S

General

Controls

Shared Cockpit

Sounds

Manage Sound Devices

Sounds

Devices

AoA Tones

Primary Sound Driver

Throttle Gate

Primary Sound Driver

AIM-9 Tone

Primary Sound Driver

Gunfire

Primary Sound Driver

RWR Alerts

Primary Sound Driver

Click 'Save Defaults' to save all current settings as default for this aircraft.

Save Defaults